



1 Karaffe 1 Höhe 33 cm
Karaffe 2 Höhe 25 cm



1a komplett 14-teilig
sechs gr. und kl. Gläser



2 Höhe der Flöten 20 cm



2a



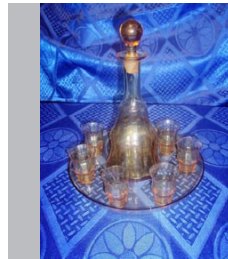
3 Karaffe Höhe 31 cm
Höhe Krug 17,5 cm
8-teilig



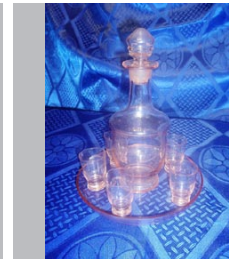
4 Karaffe Höhe 27,5 cm



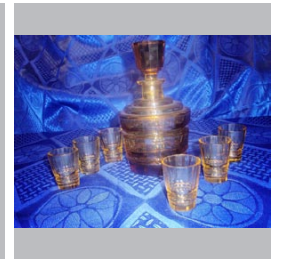
5 Tasse 27 cm
Karaffe Höhe 21,5 cm
Bersteinglas



6 Tasse 22 cm
Karaffe Höhe 24 cm



7 Tasse 18 cm
Karaffe Höhe 21
nur vier Gläser



8 Karaffe Höhe 18,5 cm
Bernsteinglas



9 Karaffe Höhe 26 cm
Krug Höhe 20 cm
8-teilig



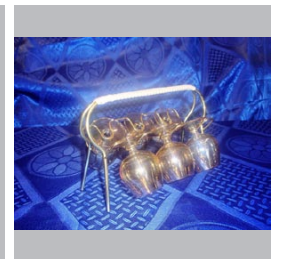
10 Karaffe 1 Höhe 33 cm
Karaffe 2 Höhe 23 cm
Krug Höhe 18 cm



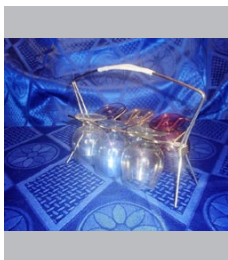
10a 14-teilig
sandgestreut -
mit Goldränder



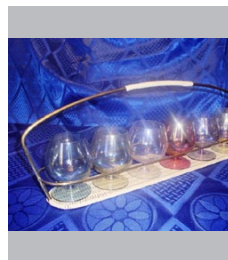
10b



11



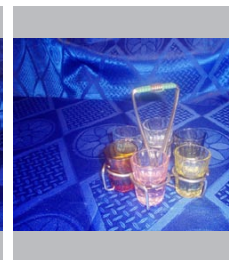
12



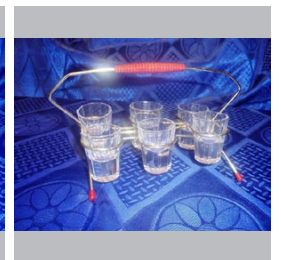
13



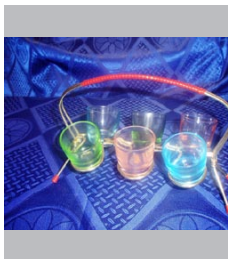
14



15



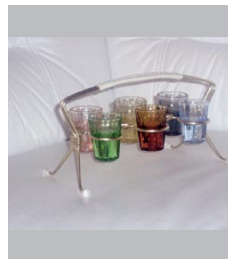
16



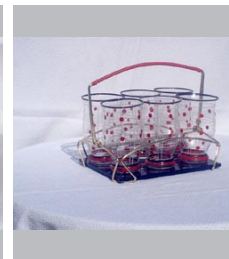
17



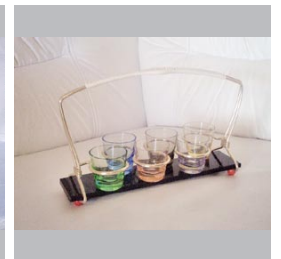
18 Karaffe Höhe 17 cm
nur fünf Gläser



19



20



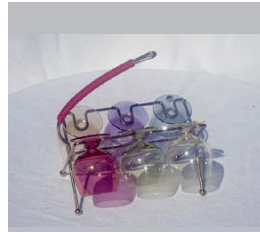
21



22



23



24



25



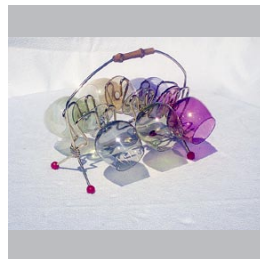
26



27



28



29



30 Karaffe Höhe 27 cm
nur vier Gläser



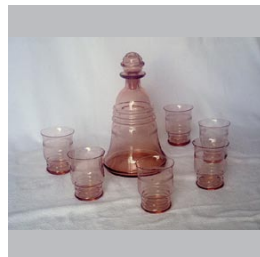
31 Karaffe Höhe 17 cm
nur vier Gläser



32 Karaffe Höhe 20 cm



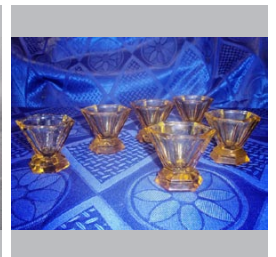
33 Karaffe Höhe 21 cm



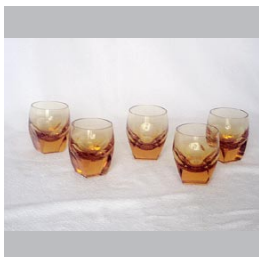
34 Karaffe Höhe 25 cm



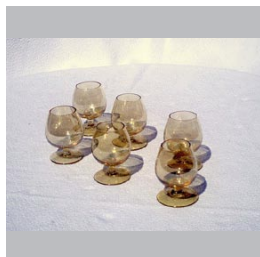
35 feine Schalen auf
Holzsockel
Höhe 9 cm



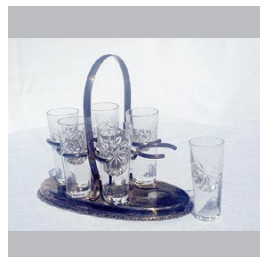
36



37



38



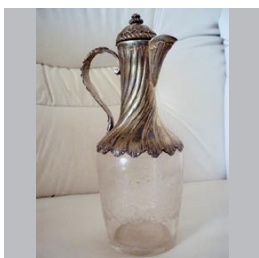
39



40



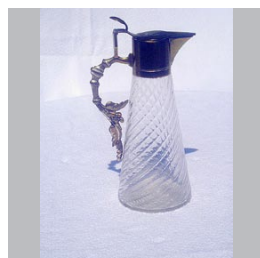
41



42 Karaffe Höhe 19 cm



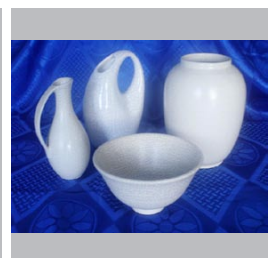
43 Karaffe Höhe 16 cm



44 Karaffe Höhe 15 cm



45 Karaffe Höhe 25 cm



46 Gmundner Keramik
Schale Höhe 9 cm
Vasen Höhe 18 cm / 21 cm